



MARCH 2020

Dawn ceremony breaks ground

At 6am on 12 February around thirty people gathered at the site of Twin Streams - Wai Oranga Rua on Franklin Rd to witness a traditional Maori blessing and ground-breaking ceremony. Conducted by Matua Hone Martin and Whaea Hazel Kaio, the site was blessed to protect all those who will work on the subdivision construction and development. The subdivision name, Wai Oranga Rua relates to water (wai) as the source of life, and the well-being (oranga) of all who will live there.

Chair of Paparoa Community Charitable Trust, Graham Taylor, then spoke of the long gestation of the project. Starting as a vision to provide retirement housing for senior residents some 12 years ago, the project went through a number of development stages culminating in Kaipara District Council granting Resource Consent to subdivide the land. He noted the confidence and support of a number of community members who made the project possible. Throughout this period the Hames family who own the land have been patient and supportive.



Matua Hone Martin



Mayor Jason Smith & PCCT Chair Graham Taylor

Kaipara Mayor Jason Smith was then invited to break the first sod. After turning the hard ground alongside Chair Graham, he spoke of the Trust realising the vision of more than a decade and acknowledged the hard work that had gone into seeing the vision become reality. He congratulated PCCT on persisting with this vision and saw that Twin Streams could well lead to further developments in Paparoa.

Following the ceremony those present moved to the Paparoa Sports Pavilion for a traditional breakfast of bacon and eggs and a chance for a chat.

By publication time Hubands Contractors Ltd will have commenced construction of the infrastructure, roading, storm water control, electrical ducting and landscaping to make the subdivision into something the whole community can be proud of.

There are still sections available both of the larger lot size and the smaller retirement lots. Contact local agents, First National and Ray White for details.

PCCT



Trust members Melinda Birt, Wayne Birt, Ken Chambers, Pete Hames, Graham Taylor, Graham Donald. Absent: Sharlene Lord & Don Hargrave

Sports & Games Family Fun Afternoon Saturday 14 March 3pm



Paparoa Sports and Recreation Association, supported by Progressive Paparoa Inc. (PPI), Paparoa Lions and Paparoa FENZ (Fire & Emergency NZ) are holding their annual Family Sports and Games Fun Afternoon at the Paparoa Showgrounds

ENTRY IS FREE

ARRIVE 3pm for 3.30pm START

Mixed teams will be made up on arrival.

T-ball, ripper rugby, tennis, egg throwing, preschool games, an obstacle course, tug-of-war and water games will be followed by a sausage sizzle and chips (for \$2), not to mention a good old fashioned lolly scramble and spot prizes for teams.

See you at the Showgrounds on the 14th

Bring the whole family and join the fun!

Any enquiries call Libby Jones 431 6822
or Ken Chambers 431 7443

Paparoa Press PP

PUBLISHED MONTHLY BY
Progressive Paparoa Inc. (PPI),
for Paparoa, Pahi, Matakahe,
Whakapirau and Tinopai.

CIRCULATION 1,050

CONTACT US - SALLY TAYLOR, EDITOR

- press@paparoa.org.nz
- ph 09 431 7209
- PPI, PO Box 107, Paparoa 0543
- www.paparoa.org.nz

ADVERTISING

Rate Card available by email

Booking & Copy deadline:

15th of month

Publication date 1st of month

ADAM STEVENS BUILDER

Licensed
Building Practitioner

For new builds,
alterations and roofing

021 741 363 A/H 09 431 6245

Council Mark says ... The Show must go on!

We've just had the Paparoa Show (or more correctly the North Kaipara Agricultural and Pastoral Show), a great turnout on a beautiful day, enhanced by the presence of the Northern Regional Young Farmer of the Year competition.

It was a very successful event. I made a modest contribution to the Indoor Section so I can speak from experience - it's a great way to feel part of a great event, and part of your community. I need to acknowledge the years of commitment shown by Elizabeth Metcalfe, recognised by the awarding of a Royal Agricultural Society medal.

The first to congratulate her was Trevor Brljevic, a previous recipient. I think the word 'legend' might have been devised for Trevor; such a humble, gracious man who is, among other things a fantastic baker and grower of veges and flowers. He puts in so many show indoor entries, not for the glory of winning (although he does a lot of that) but to



Trevor Brljevic congratulates Elizabeth Metcalfe

contribute to the occasion. He needs more competition from you and me, we can't all leave it up to Jan Robertson and others.

So here's my proposition: we have lots of new people coming into the North Kaipara area, including refugees from Auckland who may not be so tuned-in to participating in

their community at a grass roots level. One easy way to feel part of things is enter something in the Show. This means thinking now about what you might be able to enter for next year! The classes are many and varied, so if you are capable of growing something in the garden, baking something in the kitchen or even taking a photograph, there will likely be a class for you. This will also give you another incentive to come along on Show day and see what else is on offer outside.

Mark Vincent
Otamatea Ward Councillor



Sunday 8th March
www.kaiwakasports.co.nz

Revamped! **TOP OF THE ROCK**

No entries on the day

JAKUES SINCE 1924
FOUR SQUARE

Torpedo

LJ Hooker

Paparoa War Memorial Hall

Autumn Retro Dance

Saturday 16th May
7.30pm

Dance the night away

The band 'Stagetalk' will play our favourites from the 70's to the 90's
Elvis and Abba fans will not be disappointed

Dance music to suit everyone

Light supper provided
BYO drinks

Tickets: \$20.00

Pre-book with Robyn Skelton at Skeltons Drapery

Online payment option available,
or payment on the night.



Show sets a new benchmark

Paparoa A&P Show celebrated its 144th year with a bang, attracting a record crowd of showgoers and exhibitors for 2020's event. Exhibits ranged from artwork from the local primary schools to the regional finals of the Young Farmer of the Year and AgriKids, with a myriad of animals and a wide variety of show attractions in between.

We couldn't have had better attendance. Competition entries and visitors swelled numbers to significant levels.

Cattle entries were well up on last year with entries in the dry dairy section topping the list and there was a welcome return of the calf classes this year.

The Young Farmers Northern Regional Final and agri-kids competitions provided nail-biting moments and were urged on by a large gathering of spectators.

Dairy Goat classes were well supported with more than 70 entries. Likewise the equestrian events were well-supported and a fantastic array of classes kept visitors well occupied. The shearing contest, woodchop and team roping competitions had many



The music went on throughout the day with the Waipu Pipe Band, Stampede and others providing toe-tapping entertainment.

The North Kaipara Agricultural and Pastoral Association (NKKA) would like to give heartfelt thanks to all the volunteers, sponsors, trade stallholders, competitors and visitors for making 2020's Show such a great event.

Liz Clark

on the edge of their seats throughout. Indoor entries filled the hall to overflowing with everything related to growing, making, creating and brewing.



It was a case of plenty of sunblock and wide hats, and with summer temperatures in the 30s, the cool environs of the Paparoa Hall with its displays of art and crafts and produce were a welcome refuge for many. Ice creams and cold drinks were also much in demand.

Paparoa School 150th

May 8-9-10



The school's 150th Anniversary is fast approaching.

Please register for this exciting event as soon as possible.

Go to the school website for further details and a registration form. Registration forms are also available at Skeltons.

Paparoa School Website: paparoa.school.nz/150th-Anniversary-2020-1/Event-details

For further information contact:

Robyn at Skelton's Drapery
4317 306
or Pete
4316 822



FREE COMMUNITY TALK ON LIVING WITH GRIEF AND LOSS.



ALL WELCOME TO ATTEND.

Hospice Kaipara warmly invites you to attend this free session looking at:

- Grief influences and common reactions experienced.
- Supporting family and friends with grief.
- Self Care.
- Children's grief – ways to help families before and after.
- Living with grief through special and significant dates.

PLACE: Paparoa Sports Pavilion.

DATE: Wednesday March 18th.

TIME: 1-4pm (afternoon Tea provided)

FACILITATOR: Josie Scott. MA. MNZAC.

RSVP or any enquiries to:

Hospice Kaipara (09)4393330 ext. 6716.

Or office@hospicekaipara.org.nz

Please register your interest to attend by Monday 16th March 1pm.

THE KAURI MUSEUM

Real New Zealand Heritage

What's on at your Museum

- * Ngā Taonga, Te Hononga Tāngata - 'The treasures that bring our people together'
- * Textiles Exhibition - 'The Perfect Accessory'
- * Old Maps of Otamatea

For residents of the old Otamatea District: Annual passes available

5 Church Road, Matakoho, Northland. p: 09 431 7417 w: www.kaurimuseum.com

REX BROWNE CONTRACTING

- Limestone & Metal Cartage
- Truck & Digger Hire
- Farm Roads
- Earthwork & Dams
- House Sites & driveways
- Wrapped Silage & Hay
- Cultivation
- Fencing & Mulching



Maize Silage planting & harvesting

☎ 09 431 7556
☎ 021 720 590

Kaimanawa Muster 2020

Can you help to save a Kaimanawa?

The annual Kaimanawa Horse Muster is fast approaching with the aerial count due to be carried out over the next few weeks. This will determine how many horses are to be mustered and consequently, how many homes will be needed to save the lives of the horses.

If anybody is able to help either by donation or sponsorship, or if you would like to take on the responsibility of owning a wild horse, then get your applications in as soon as possible. Give these lovely creatures a chance of life.

If you do not have the facilities to handle a wild or unhandled Kaimanawa but you would really like to own one, there are Kai's available that have been handled from previous musters and are awaiting their forever home. In turn this means that handlers will be able to save more horses out of this upcoming muster. These wee horses are very intelligent, trainable and versatile.



Applications for the 2020 Kaimanawas are open now! Go to Kaimanawa Heritage Horses website to download a form kaimanwaheritagehorses.org, or alternatively email muster@kaimanawa.org



Meet KHH 'Little Shae', the wee filly adopted in 2019.

Starbright Wellness

Massage

Reiki

Reflexology

Fri/Sat
bookings

Vicky Jennings

021 2484259

144 Franklin Rd, Paparoa

Crompton Engineering Ltd

Phone/fax 09 439 2393
31 Jellicoe Road, Ruawai



Hay Racks
- covered
or uncovered

Palm Kernel
Trailers



website: cromptonengineering.co.nz
email: crompton.eng@xtra.co.nz

Paparoa beauty business

Correction of phone number - 022 085 4770



Introducing Sian Muskett of Perfection Beauty and Brows.

With over 10 years experience as a qualified beauty therapist, Sian has moved back to her roots in Paparoa to open her own business. Sian attended Otamatea High School when the family lived in Maungaturoto, and is now living in Paparoa. Previously she worked at Bare Waxing and Skin Centre in Auckland.

Sian specialises in eye-brow tattooing, eye-brow sculpting, waxing, lash lifts and eye works. She will be sharing premises with Nicky Reid's Connections Real Estate in the clinic that was formerly Skin Image next to the Paparoa cafe (The Caff).

Taking bookings now. Appointments by arrangement only.

Call Sian 022 085 4770



Kaipara Physiotherapy

LYNDESEY BARGH PHYSIOTHERAPY

Paparoa Medical Centre

TUESDAY CLINIC

for appts ph 09 439 1656

Maungaturoto Medical Centre

Mon/Thur/Fri)

09 431 9062 or 09 4391656

email: lyndseybargh@callplus.net.nz

Taonga, gum, silk and digital projection ...

There's always something new happening at The Kauri Museum and it's a great place to spend a few leisurely hours out of the hot sun. It's been a busy summer season for us, with lots of visitors and locals dropping in to explore the museum. If you have visitors staying remember, The Kauri Museum is open every day from 9am until 5pm. It's always a great place to bring friends and family.

MOARI TAONGA

Have you visited our special exhibitions gallery? Discover Māori taonga (treasures) collected by pioneer Andrew Rintoul, now on display along with other taonga from the museum's collection. Watch the documentary commissioned by The Kauri Museum, which captures the cultural significance of these taonga to our community.



If you just want to pop in to visit the taonga exhibition, entry is by koha/donation, otherwise it's included with your museum ticket.

GUM POLISHING

Have you ever polished kauri gum from a raw lump into a shining golden nugget? The Kauri Museum has a new

'hands on' gum polishing experience for visitors to enjoy. Our kauri gum polisher Thelma can show you how it's done. If you want to have a go yourself you can book a gum polishing workshop with Thelma for \$15 a head. Gum polishing packs are available in the Museum shop for \$15. These make great gifts for kids.

PERFECT ACCESSORIES

Closing on 30th March, 'The Perfect Accessory' exhibition is upstairs in the Otamatea Boarding House display. From riding boots to silk dancing pumps, discover some of the Perfect Accessories in The Kauri Museum collection.

DIGITAL WORKSHOPS

A big 'shout out' to all you vibrant 16-24 year old creatives. Have you signed up for the FREE NYSAF digital workshops which show you how to do animation, digital projection mapping and live VJ mixing? Dates are 21 and 22 March at The Kauri Museum. Places are limited; book now.

For more info check out creativenorthland.com or register by emailing maggiebuxton@gmail.com

Luciana Orr

Marketing Co-ordinator

AL's Upholstery

Alan Hilton



Automotive Furniture Covers Seats

over 30yrs experience

021 0709101

100 Petley Rd, Paparoa

PLUMBER

Kaiwaka to Ruawai

- 30 years' experience
- All plumbing services including new houses and maintenance



ANDREW KENNY
ph 027 642 8320

Connecting Paparoa

The latest Paparoa Community Connections meeting has just been held and great progress is being made. (Further information to follow next month.)

If you haven't participated up to now, you are always very welcome to join and be a part of these community projects.

- * Mountain bike track
- * Bike track Matakoho to Paparoa
- * Shared path around village
- * Primary School activity hub
- * Heritage, cultural and art work around village
- * Ongoing communication between groups and projects

For any further information and/or if you would like to be involved email Libby at paparoa.connections@gmail.com or ph. 431 6822



Lions Club of Ruawai



Annual Charity Auction Saturday 14 March

At Kaipara Kumara Forecourt at 10.00 am

Trading Table opens: 9.00 am

Viewing of auction goods: 9.30 am

Antiques, furniture, electrical appliances, toys, books, household goods, clothes, bric-a-brac etc

Food and refreshments for sale

Sponsor's products for auction - includes farming items

Contact: Jim Simpson on 09 439 2557

Or Text 021 315246 to arrange collection of goods

jdsimpson@slingshot.co.nz

We look forward to your support!



LANCE KEAY

CONTRACTING LTD

- Effluent Pond Cleaning
- Round Bale Hay & Silage
- Rippling & Discing
- Power Harrow & Air Seeder
- Under Sowing
- Gerse/Scrub Mutching
- Conventional Baling

Ph: 09 431 6308
E: lancekeaycontracting@farmside.co.nz

PH: 021 383 908

White Rock Gallery
Original Kaipara Created Arts & Crafts
5 Church Road, Matakohe
 next to The Kauri Museum
Gallery 021 0267 8241
Enquiries 021 250 8613
 whiterockgallerynz@gmail.com
 Like us on Facebook
There's something for everyone!
OPEN 7 DAYS 10am-4pm



Libby Jones - Northland District Health Board

We had a great turn out at the community meeting organised by Northland DHB in Maungaturoto, to get feedback from our area on our experiences of health services and our health priorities.

This was to help the DHB develop the new Northland Health Strategy, which will provide high-level direction for delivering health services and improving wellbeing in Northland.

It was a privilege to be part of this group of around 30 residents from Paparooa to Mangawhai and listen to their stories of good and bad experiences and their ideas on how things could be done better.

There was a large focus on issues in primary care, covering access to GPs; community services; mental health services; transport to services; desire for cultural alternatives such as Rongoā medicine; options for young people, including those who are not in the relative security of a school environment any longer; desire for more holistic approach to

health care; dignity and care for our vulnerable citizens, both older people and those with disabilities; hospital issues re discharge planning, especially obtaining services after discharge over weekends, and communication between hospital and primary care; as well as some questions about Ministry of Health Funding such as the low payment for Carer Support, lack of subsidised dental care, and cost of running community services such as Linking Hands. There was also a strong focus on being proactive about our own health to keep ourselves well and seeking information to make good decisions.

You may have other experiences and ideas to add, so if you were not able to attend but would still like to have your voice heard, complete the survey online <https://community.northlanddhb.org.nz/NHS/feedback/>

We started to talk about solutions for our area and there was certainly lots of energy for this. Maybe as a follow on we could organise a meeting to look further at local options for wellness solutions, communication and co-ordination. Do get in touch if this interests you.

Stay well, Libby Jones
 hames.jones@xtra.co.nz
 021 2080093

KMU SURVEYS LTD
 MAUNGATUROTO

Ken Urquhart
 Licensed Cadastral Surveyor

09 431 8705
021 161 2344
 kenurquhart@xtra.co.nz

Community Connexions

Arty Farties Inc.

Due to the current water shortage the Community Gardens will be closed for a while. This is a good opportunity to replenish the goodness in the soil in preparation for the next crop of vegetables.

Words of wisdom: "Feed the soil, not the plants."

The A&P Show stall was a huge success and raised much needed funds for our future needs.

Many thanks to the kind folk who have been donating fruit to supplement the diets of those families in need.

Oh - and don't forget to get your tickets in our Gardeners Raffle. Tickets are available at the Paparooa Store.

Keep safe, conserve water, and lend a helping hand to those who may be struggling in life.

Cheers from us all at Arty Farties.

Quote of the month:

"Everything that slows us down and forces patience, everything that sets us back into the slow circles of nature, is a help. Gardening is an instrument of grace."

Nicky Reid

021 103 6277

I am Otamatea's boutique, owner-operated

Real Estate Agency

specialising in Farms, Lifestyle Blocks and Houses

MREINZ, Licensed under the REA 2008

Offices:

Ruawai – next to Farmsource

Paparooa – opposite the Farmers Market

To celebrate the opening of my new office in Paparooa I am offering \$250 worth of free marketing for new listings (conditions apply).

I offer customised marketing plans tailored to suit each unique property and to reach buyers in any target market.

Free drone photography

Free market appraisals

Call me now for a confidential chat.

Connections **Real Estate**

LIFESTYLE AUTOS

Roger Price

Full Mechanical Services

Warrants of Fitness



Paparooa Valley Road - next door to g.a.s.

Phone 431 6620



Lions Update

The Lions caravan has had a very busy summer, with lots of outings and countless buckets of hot chips, hotdogs, and cold drinks! The firewood team has been out and about too, cutting logs in preparation for winter, which will no doubt be here before we know it.

The annual Pioneer Luncheon is in a few weeks on 20 March. If you are a senior citizen and haven't received an invitation but would like to come, please contact Pete Hames 4316 822. A reminder to those who have received their invitation, to please RSVP by 13 March.



Lions members work the firewood splitter at Paparoa A&P Show

LAWNS INC
GROUND MAINTENANCE SPECIALISTS
 MAUNGATUROTO - RUAWAI
 RELIABLE & AFFORDABLE
 NO JOB TOO
 BIG OR SMALL

LAWN SERVICES - REGULAR / ONE OFF
 GOLD CARD DISCOUNT
 WORK AND INCOME QUOTES
09 4316 583
CALL TODAY FOR A QUOTE



President Stephen Seager with Pam Lovatt at the inaugural banner hanging!

Recently, members of Paparoa Lions Club were presented with a new club banner cleverly painted by Pam Lovatt. This replaces an earlier one which has always been hung at Club dinner meetings, much to the pride of members.

For our monthly dinner meetings we invite community groups to cater as a fundraising opportunity. If your group is interested in catering please contact Ken Chambers 4317 443.

We always welcome guests at our dinner meetings so do be in touch if you would like to join us.

Pete Hames
4316822

do you need a
WEBSITE ?
 Local, friendly
 website design
 & management.
sme-sitedesign.co.nz

Contact Paul for more information:
 E: paul@sme-sitedesign.co.nz
 T: 09 431-7063
 M: 022 625-4156

**Get More Customers
 Cost Effective Marketing**

Maungaturoto Rest Home

In residence are:

- Henry Daniels formerly of Riverview Place
- Dora Cross formerly of Mareretu
- Adrienne Angus formerly of Dargaville
- Blanche Huband of Maungaturoto
- Eric Harris Rex & Yvonne Harris's family
- David Spellers formerly of Ruawai
- Agnes Philpott Josie Benetto's mother
- Pauline Bellows Maree Cartwright's mother
- Joy Miller of Maungaturoto
- Pamela Stewart Terry & Tony Littlejohn's family
- Evelyn Annis Judith R & Christine B's mother
- Colleen Stockman formerly of Maungaturoto

Kaipara Cleaning Co. Tim & Sharlene Lord

- Pest Control
- Carpets & Upholstery
- Interior and Exterior Home Cleaning

e-mail - kaiparacleaningco@farmside.co.nz
 Facebook - www.facebook.com/kaiparacleaningco

Phone 021 114 6729
www.kaiparacleaningco.co.nz

Beds & More
 OUTLET STORE
 you'll be surprised!

**NORTHLAND'S
 BIGGEST
 BED OUTLET STORE**

1/2 PRICE BEDS
 SECONDS & SAMPLES
 SLAT BEDS
 PILLOWS
 TOPPERS
 ADJUSTABLE BEDS
 BEDROOM FURNITURE

**STOP BY AT THE WELL CAFÉ
 OPPOSITE US—WHEN YOU COME**

09 439 2243
18 FREYBERG ROAD, RUAWAI

'Finale' Opera in The Garden

Opera North's hugely successful annual Opera in the Garden promises to be especially memorable in 2020 as this will be the last time that Opera in the Garden will be held in Kennaway's beautiful garden, Operacado, in Glenbervie, Whangarei.

The programme will celebrate the last 20+ years, reflecting the best of what has been done and also what may be in the future. The date, 4 April, is later than usual so that special Guest Artist **Eliza Boom** could fit this performance into her busy calendar.

Eliza started learning from Joan Kennaway at age 15, the beginning of the journey that lead her to perform opera on the world stage. She is currently training at the National Opera Studio in London, supported by the Kiri Te Kanawa Foundation and the Drake Calleja Trust. Eliza has won many awards and competitions, including the Les Azuriales International Singing Competition, Frederic Cox Award, and was runner-up in the Lexus Song Quest 2018.

Multi-talented operasinger and performer, **Kawiti Waetford** will also perform and the

concert will feature the Opera North chorus who are singing more songs than usual! Once again, you have an opportunity to experience singing of the highest calibre, making this an occasion not to be missed.

Rick & (the late) Joan Kennaway are well known for their love of music (and loved by many) from our part of the Kaipara. Whilst farming on Mooney Road they were integral to the establishment of the Otamatea Repertory Theatre and were missed dearly when they moved to the avocado orchard in Whangarei.

Pack the chilly bin, a blanket and join us for a really enjoyable afternoon concert, filled with quality singing. Celebrate with past favourites and musical hints to Opera North's future.

Tickets: eventfinder.co.nz, The Hub, or gate sales.



Paparooa School

We've had a fabulous start to the year. Due to the hot weather, our swimming pool has been much loved by the community.

Students have been doing 'Swim for Life' and preparing for our various swimming sports. This year, Tina Ball and Hanna Stevens ran an after school 'Swim Safe' programme that many people at school and the wider community have been involved with.

Classrooms are in full swing and children are enjoying the new school setup, with our large Multipurpose Room being used for kapa haka, music, and

Coding and Robotics.

PAPAROOA SCHOOL 150TH

Staff and Committee members are also busily preparing for our 150th Anniversary. This event will take place on the 8, 9 and 10th May. Please visit our school website for further details and registration form. Registration forms are also available at Skeltons.

School Website: <http://www.paparooa.school.nz/150th-Anniversary-2020-1/Event-details>

Please register for this exciting event as soon as possible,

Simon Schuster, Principal



Paparooa School 150th

The Programme

FRIDAY 8th MAY School open all day for visitors

10am - Old School Days

12.50pm - Tabloid sports

5-6.30pm - Drinks and Nibbles (Registration essential)

SATURDAY 9th MAY

Food available for purchase during the day

9am - Registration begins

10am - Assemble Paparooa School

10.15am - Bell Rings

10.25am - Welcome by Board Chair and Principal

10.30am - Roll Call

11.15am - Official Opening & Kapahaka performance

11.45am - Cake Cutting

12pm - Decades Photos

12.30-2.30pm - School activities

* Photo display room * Field games * Art displays

2pm onwards - Bus trip to local places of interest - \$5

6pm Dinner - Paparooa Hall - registration essential

* Guest Speaker * Photo booth * Live band

* Speeches from two current Paparooa students

SUNDAY 10th MAY

10.30am Church Service - Paparooa Community Church, Hook Road

Opera in the Garden

Finale

Join
ELIZA BOOM
award winning international singer

OPERA NORTH & Kawiti Waetford
to farewell OPERACADO as a venue

Celebrate with past favourites and musical hints to Opera North's future

Kennaway's Operacado Orchard, 643 Ngunguru Road, Glenbervie. Adults \$40 School age children \$15

SATURDAY 4TH APRIL AT 2PM
Tickets: www.eventfinda.co.nz, the Hub or gate sales

Rhoda Morrison
Consistent Award Winning Salesperson

Achieving top results for Clients!

09-431 6912
0274 800 691

rhoda@fnkaipara.co.nz
www.roperandjones.co.nz

firstnational REAL ESTATE Roper & Jones
Dargaville Realty Ltd, Licensed REAA 2008

The Library

The summer heat is certainly taking its toll on everyone but the library is a refuge as a result as it's a great place to come and get books to read while we all siesta the hot afternoons away.

Our book club had its first 2020 meeting and we adjourned to the grassy area outside complete with 'tea' trolley for a wonderful evening of fun and laughter and some great book reviews, one of which I have submitted for you to enjoy.



Debbie Blythen loves Hairy Maclary!

The comradeship amongst the group has been fabulous and we are a close bunch of friends sharing our love of books and stories.

Jas, Library Manager



Artwork - Dahlias for Dementia

Totara House garden ready to welcome the hundreds of visitors who participated in the Dahlias for Dementia house and garden tour weekend on 22-23 of February. Artists donated their work to raise funds for Dahlias for Dementia.

Work was on sale and ALL proceeds went towards fundraising for the proposed Dementia Unit in Maungaturoto.

Many thanks go to the artists who gave their time and skill to provide the lovely varied paintings and craft work.

Visitors were entertained by the music group 'Unprediktable' all weekend while dancing on the lawn, picnicking under the trees and enjoying the peaceful gardens.

White Rock Gallery is privileged to have been part of this amazing fundraising event.



'Totara House Dahlias' by Dennise Brownlie was readily sold over the weekend

Congratulations to the organisers who did a fabulous job and also thanks to our sponsor, Paparoa County Depot Trust, and Matakoho Kauri Museum for welcoming us to Totara House.

Unsold artwork from the weekend is now on display and for sale at White Rock Gallery, the proceeds will go to 'Dahlias for Dementia'. Works are priced at \$150 or less.

The Gallery is open daily from 10am to 4pm, located next to the Matakoho Kauri Museum.

Sue Taylor

Birt & Currie Surveyors Ltd



Local Phone
09 280-9591

**Timely,
friendly &
personal
service**

info@landsurveyors.co.nz
www.landsurveyors.co.nz
PO Box 120 Paparoa 0543



**PETE
THE
BUILDER**

your local friendly builder

Peter Clark

Ph: 0276 713 416

petethebuilderltd@gmail.com
582 Pahi Road, R D 1, Paparoa, 0571
A/hrs 09 431 6005

Book Review

TRAINSPOTTING - by Irvine Welsh

Trainspotting is a fantastic, but horribly depressing book. There are a whole host of characters, but it mostly centres on a junkie Mark Renton who lives in Scotland in the 90's.

Reading this book is a dark trip through a junkie's head and it makes you feel dirty going there. The sex, violence and substance abuse is all disgusting and borne out of desperation, existential boredom and a general disdain for fellow human beings. And who can even call these people human? Their impulsive and degrading behaviour with little or no thought about the consequences of their actions and with no understanding of why they really do it in the first place. The general feeling of the book is that most people are animals, fed brilliant things they don't understand by people smarter than they are and they don't even realise they are abusing the privileges.

One of the only exceptions is Mark Renton. Intelligent enough to really grasp the extent of his wrongs and understand the repercussions, he struggles with the addiction, and when he cannot beat it he fully embraces it.

On the one hand I felt like I needed to shower after every chapter but on the other ... if you embrace not only his ups and downs you'll find yourself enjoying this book. It definitely fosters no love for any of the other characters in the story and I would even say that this spilled out into my own life. I began, near the end to look at people and think "how long would it take that person to become a Begby, Sickboy, Spud or Mark"? Because the best thing Irvine Welsh does in this book is hold up a mirror.

Reviewed - by Lucy Denton



KAIPARA PLUMBING LTD



**DRAINAGE
YOUR LOCAL
PLUMBING
SPECIALISTS**

**ALL
GENERAL
PLUMBING
AND
MAINTENANCE**



**Master
Plumbers**
Representing Excellence

PH GRAHAM
027 244 5430

Otamatea Repertory Theatre

SEUSSICAL JNR

Directed by Peter Flower

After a very successful audition weekend, the show has been cast and rehearsals are now underway. Some of you will remember that we performed the full-length version of 'Seussical' in 2013.

This year's production is the junior version of the show and it will be performed in May 2020. The entire cast is comprised of a very talented bunch of young performers. The pace will be lively, with plenty of opportunity for inventive set, lighting and costume design and music both ensemble and solo.

'Seussical Jnr', described as a fantastical, magical musical, is based on the books of Dr Seuss. The story is an amalgamation of many of his most famous books with the 'Cat in the Hat' acting as 'your host and MC'. It goes from the Jungle of Nool to the Circus McGurkus and to the invisible world of the Whos.

Dr. Seuss' lessons such as - "don't ever give up, use your imagination and be faithful one hundred percent" - are lovingly brought to life on the stage.

**"Now, imagine a curtain and what lies behind,
the kind of a place you might see in your mind ...
From the page to the stage, come along and enjoy -
this tale of an elephant, a bird and a boy!"**

There will be eight performances in May:

Sat 9 May and Sun 10 May @ 2pm

Sat 16 May @ 2pm and 7pm, Sun 17 May @ 2pm

Fri 22 May @ 7.30pm, Sat 23 May @ 2pm, Sun 24 May @ 2pm

Tickets will be on sale soon through Tony's Lotto Shop and online at www.ort.org.nz

Maura Flower



Ruawai Lions

Music in the Garden



A very enjoyable summer event held at Jim and Dorothy Simpson's which started at 4pm to dodge the heat! Excellent entertainment, fine weather, gentle breeze, a beautiful garden with dahlias, roses and sunflowers and a good variety of yummy food for sale.



Performers included Salt River Band from Pahi and 'Take 6', the ladies' singing group (great harmony) who also combined with some of the Dargaville Men's group to sing more much loved songs. Others were Harmony Day from Ruawai College and Jess Mitchell who has just left school (great to hear the younger talent), Jone Yelich (an awesome tenor who grew up in Ruawai), Mike Durney of Neems Road singing some ballads (he used to be in the TV programme 'Happen Inn') and Lance Gleeson (local 'cowboy' and Johnny Cash fan). There was an awesome selection of

popular music mainly from the 50s,60s era.

Later, in the cool of the evening Salt River's beat inspired us to get up and dance to the music we enjoyed so much in our younger years! This also proved to be a good opportunity for musos to meet and mix with each other!

A member of the audience commented, "What a lovely occasion to relax and enjoy this beautiful summer. Just a light breeze to keep everyone cool. Lovely music playing and a gorgeous garden to wander around. Pure bliss!"

Dorothy Simpson



Earthworks | Drainage | Roothing Water Delivery

Galvanised
Gates
Assorted Timber
Landscaping
Supplies
Drainage
Supplies
Graded
Aggregate
& Much more

Bring your trailer or
we can deliver

2088 Paparooa Valley Road, Paparooa
09 431 8339

FARMWORK SERVICES

For all types of fencing, stockyards,
handyman work, tree felling, tractor work etc.



Mike 09 431 6509

027 203 2694

farmwork.services@gmail.com

**12 tonne digger now available
for driveways, farm tracks, hole boring etc**


The big dry

According to the NRC rain station at Ariel Farm, 14mm has fallen in February with 11mm of that in 2 hours on the 22nd.

Compare that to last year when 79mm fell in January and February while in 2018, the year before last, we were inflicted with 363 mm.

The **average** for Jan/Feb for 2014 to 2018 was 177mm.

While we have only had 14mm this year, other local areas have had even less.

We certainly have had very erratic summer rainfalls. 



Maungaturoto & Districts Rotary

The year kicks off

Not a great deal to report as we are just beginning a new year. A very successful BBQ at President Les's home, and a pot luck dinner were held in January.

This year we again have the catering services of OHS Netball and 'DOE gold' students and parents. It's a win-win situation as not only do we get a delicious meal, and they raise funds in the process.

We have six volunteer instructors in our Driver Mentoring scheme who mentor those with a Learner's licence to progress to their Restricted. Whangarei Mentor training days ensure we know the expectations of the testing officer. Recently at least four students have passed their restricted licences.

At February's Paparoa A&P show about a third of our club members helped out in various capacities and shared gate duty with our fellow service club, the Lions.

Earlier in February we had a hosted members of Orewa/

Stillwater satellite club (of which our Assistant Governor is a member). It's great to socialise with fellow rotarians and hear of the activities they focus on and fundraisers they participate in. Interaction with other clubs is an important part of Rotary.

A club 'assembly' focused on what is important to each of us helping us to plan the year ahead. We meet weekly but may look at some form of 'associate membership'.

At Nikau Grove we have completed a bridge, will build a structure to protect roots of the kauri tree, and plant another companion kauri tree to encourage seeding.

If you are interested in joining us, please don't hesitate to get in touch with a current Rotarian or leave a message on our Facebook page.

Eileen Parsons 021 1420 357

Charades, jokes & games!

Another happy gathering of our senior citizens was had at the Selwyn Centre last Thursday.

We tried charades for the first time - with varying success, Sue asked a few jokes and then we played another word game - "How many words can be found in the word 'performance'?" Everybody enthusiastically participated and we reached 122 and still there were more!

Next week we'll try something else.

Visitors are always welcome - especially newcomers to the area. It's a great way to meet people and make friends. Come and see for yourself.

Thursday's 9.45-12 noon, Paparoa Community Church Hall
For enquiries contact Sue Skelton co-ordinator 4316 2241.

Gael Johnston



4T-DIGGER – BOBCAT – TIP TRUCK

Property Maintenance – Driveways – Building Sites
Stump & Tree Removal – Hole Boring – Chain Trencher
Calf Shed and Stockyard Cleaning

KAIPARA – WHANGAREI – RODNEY

Phone Matt: 021 199 6677

Email: mprabrownecontractors@gmail.com

Lisa's Beauty Retreat

021455904 - 094316570
lisa_annes@yahoo.com
www.lisabeautytherapy.com

Paparoa Store

Proudly Supporting Paparoa

OPEN 7 DAYS

Monday to Saturday ... 7am-6pm

Sunday 9am-5pm



We stock a great selection of

CONFECTIONERY, ORGANIC, DELI, MEAT,
FRUIT, VEGES, FROZEN GOODS, BEER, WINE
and a wide range of grocery items at excellent prices

DVD's \$1 to \$8 per night

EFTPOS NZ HERALD POST CENTRE

Phone / Fax 431-7320

Cnr. Franklin Road and State Highway 12

Paparooa Print Shop

**At Skelton's
Paparooa Drapery
431 7306**



**See Robyn for
all your printing needs**

**The
Glass Guy**



**Phone Colin
09 431 6595**

Letters from The Old Post Office

The time has come to speak of statistics, facts and other figures. All of which are open to mis-interpretation, re-interpretation and just plain manipulation. As Mark Twain had Benjamin Disraeli claim "There are three types of lies: lies, damn lies, and statistics." Therefore, Dear Reader please regard the following research with an analytical mind!

Slowly, it has crept into my consciousness like a soporific sloth that certain genders exhibit particular traits. It is a much-stated truism that men are good at barbeques and women are good at salad, that males put out the rubbish and women put up with it.

Statistics support this finding. A valid survey has been undertaken and a broad range of genders and ages has been interrogated/ interviewed. 90% supported the previous statement, 8% disagreed and 2% didn't know. (D.C 2.2.20 published PP series 2©©).

However, the difference in certain attitudes has been made very clear through a series of experiments in the field. And, Dear Reader, these experiments, I believe have wider implications.

The study has taken place over a period of time, the location being in, and around, a white

wooden gate, a wooden fence and a white rambling rose, a Lamarque. A rose of luminous beauty, perfume and quite sharp thorns. The study group comprising mainly, but not only, the men in the shed. Now, this shrub likes to spread her arms and embrace the passerby. Often, the enthusiasm of her "hugs" causes her to catch at skin and shirt. Quite painfully at times.

The findings are 100% in their consistency. Bracing upper lips and sinewy biceps, every one of those men in the shed forge powerfully through all obstacles. Epithets tend to fall quite liberally, as do remnants of shirt and skin. However, not one stood daintily back and disentangled themselves carefully. No, non! With forceful war cries they battled on.

Statistics



Whereas female visitors stop at the first tug, thoughtfully view the entanglement and delicately untie themselves while enjoying Lamarques' exquisite perfume.

Statistically speaking then it seems the men in the shed plough on regardless while the female gender appear to realise the sharpness of thorns. (Perhaps they are considering "How many thorns of human nature are bristling conceits, buds of promise grown sharp for want of congenial climate.") *Or perhaps they have considered the terrain and temper their approach to suit?

Dear Reader, the experiment speaks for itself, the case is rested.

References: *John Burroughs
* "Chapters from My
Autobiography" - XX
Deb



**PAPAROOA
FARMER'S
MARKET**

**EVERY SATURDAY VILLAGE GREEN 9-12
STALLHOLDERS CONTACT
GRAHAM 09 4317 209 or 0274 75 4490
grnt@xtra.co.nz**

Market news

The Farmer's Market is a regular event on Saturdays 9-12noon in Paparooa at The Village Green. The holiday summer season has seen a constant stream of visitors on their way through Paparooa. You can't miss the orange traffic cones which indicate something going on!

Pictured at right is Maggie with her scrumptious 'Bay Leaf Vine' marinated olives - a speciality. She also has a good range of pickles, sauces, jams and marmalade. And, on top of all that, a wonderful selection of 'Tussy mussy fragrant soy candles and bath salts (soaps are coming soon).



Maggie Bailey

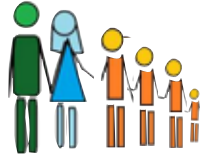


John Weir - succulents & cacti

Check out Matakoho Succulents - John has a unique and varied range of succulents and cacti from the 'cuties to the prickleys'.

Lately some stall holders have not attended, but they will be present in upcoming weeks. There have been several enquiries for new stalls, so you never know what attraction will be there next time you come to the market. Join the crowd, indulge in a coffee from any of the outlets across the road and have a leisurely and social morning in Paparooa! See you soon.

From our family to yours On-going Projects



Garden work is progressing, albeit slowly as I choose to garden only between 12 and 2pm when things will be at their hottest so I can quit the job early to wash away sweat.

Well ... actually, I garden when Hudson naps - which seems to be less and less frequent the older he gets and another phase of toddlerdom is entered into.

Other enjoyable habits from a 16-month-old are 'scream shouting' when he cannot move something he wants. Hudson thinks he is entitled to anything that anyone is eating, anywhere, such as at the beach and also to eat anything he can get his hands onto, such as toothpaste.

So the garden work will continue slowly, until it's a muddy mush, which will be welcome when things feel so hot and dry, but by March - who knows!

The weather is another 'thing' I have no expectations for anymore... it pays to always be grateful for water, always be grateful for sunshine!

Our other 2020 projects are focused around the garden - permanent jobs that take so long that by the time its finished- such as weeding and mulching all 100+ fruit trees, the year has ended and we will be back to tree #1 and start the whole job over. But ... when I'm a 'fruitarian' because there is so much to eat in the orchard, and sticky all over with peach juice, it will be all worth it.

Have a sweet productive March!

Jenny

Summer gardening

With the first signs of Autumn appearing, the growing season is slowing. The long hot, dry summer is excellent for ripening fruits and there are few signs of fungal diseases- despite the challenges to keep the garden alive with any spare water to keep plants producing.

March is a busy month for harvesting - fruit, veges and herbs. Be creative making chutneys, jams and jellies. With excess courgettes make relish or add to a pasta sauce that can be preserved in a jar or frozen in containers.

Tomato and courgette recipe mix:

Fry and brown 1 onion and any amount of courgettes in a small amount of butter or margarine, add chopped tomatoes, approx 1/4-1/2 teaspoon of 'Italian Herbs', a small amount of brown sugar, salt and pepper. Cook together for a few minutes and cool to freeze in small containers. Makes a nice accompaniment warmed with cold meat, sausages, steak and fish over the winter.

Make plums into jams, chutneys and spicy sauces, or freeze either whole, or cut up into icecream containers (approx. 1.5kg blocks) for use at a later date. Stewed whole in syrup is delicious in baked sponge top puddings.

While figs tend to be underrated, they are well suited to our Mediterranean type climate. This summer has been no exception, but they need plenty of water from the first signs of fruit starting to swell up. I'm currently tipping a few buckets of waste washing water round the fig tree base every few days. They like growing in full sun on NE facing slopes, requiring a small amount of chilling during winter to ensure good flowering in spring. They make great fig and ginger jam or you can stew them as follows. Boil figs in a large pot of water with a pinch of salt, add about 3 cups sugar and cook until soft. Leave aside (overnight), and bring back to the boil the next day with the juice of a lemon and 1 tsp of vanilla. Freeze in containers to use with winter desserts.

Jan R

CABINS FOR RENT



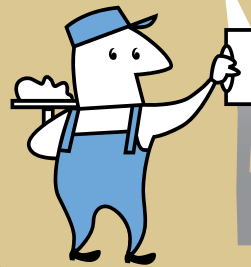
2.4 x 3.6m \$70 P/W
2.4 x 4.2m \$80 P/W
plus delivery & bond

INCLUDES POWER LEAD,
CARPET, AND CURTAINS
FULLY INSULATED

Ph Keith 021 2394251

TINOPAI PLASTERERS

WE GUARANTEE THE HIGHEST QUALITY FINISH



35 Years experience in...

- GIB Stopping
- Fibrous Plastering

for FREE quote, call us now!
Trevor 021 0300 073

g.a.s.
Petrol Service Stations

Paparoa

Open 7 days
Mon-Sun 6am-10pm
09 431 6302

- Petrol, Diesel & Oil
- Fresha Valley milk 2L \$3.50
- Milk & bread combo \$5.50
- Great variety of snacks
- Pet food - cats/dogs
- Cop-Rice biscuits 20kg
- Great variety of Bait and all fishing requirements
- Top ups & prepay
- Frozen foods
- Firewood
- Hardware
- TRAILER HIRE



■ Barista Coffee



AA smart fuel card
accepted here
6 cents off every day

Manager: Navjot Singh
021 230 2801

BRYCE

THE LOCKSMITH LTD

Master
Locksmith

Bryce Frewin
Paparooa
Ph: 021 850 983



bryce@brycethelocksmith.co.nz
www.brycethelocksmith.co.nz

FENCING SPECIALISTS

CALL CHRIS HICKEY ON 027 561 1719 email: fencingspecialists.nz@gmail.com



ALL ASPECTS OF FARM & LIFESTYLE BLOCK FENCING & MAINTENANCE INCLUDING:

- Post & Batten • Entrances
- Post & Rail • Retaining Walls
- Stock Yards • Riparian Lots
- Netting • Subdivision

JORCO CONTRACTORS

AG & CIVIL SPECIALISTS

SERVICING KAIPARA AND NORTHLAND



Depots at:
580 Neems Road
MATAKOHE

634 Kara Road
MAUNGATAPERE

Call Trevor for a free
no obligation quote

☎ 021 259 0459

✉ trevor@jorco.co.nz

Facebook: @jorcocontractors

- Roading and Earthmoving
- Excavators, Trucks, Grader and Roller
- 30tn capacity Widening Transporter
- Bulk Fertiliser and Metal Cartage
- Fertiliser and Lime Spreading with GPS mapping
- 4x4 Truck and Tractor Spreaders
- Silage, Hay Baling and sales
- Cultivation 3-6m Power Harrows and Discs
- Mulching



Earthbeat festival

Have you ever found yourself struggling to make those big decisions?

Do you put things off until the last minute only to find yourself rushing around like a loon to get them done?

Ever feel like you're stuck in a rut and your life isn't moving in the direction you want?

If you answered **YES** to at least one of the questions above, you might be interested to know about the **EARTHBEAT FESTIVAL** happening 20-22 March, Atiu Creek, Port Albert, where these questions and many more will be answered.

Enjoy yoga, meditation, music, dance, join a talk or presentation; plus indulge in some healing and wholesome food.

If you're super keen to get the answers to the above questions come and find me (Carrie) at the Festival; I'll be giving a 90min interactive presentation to help you **'Reclaim your Life'**:

☘ Discover the number one thing that's really holding you back from the life you want and how to overcome it.

☘ How to keep on top of your to do list so that you can have more fun!

☘ Find ways to increase your self-confidence to handle all that life throws your way.

☘ Learn strategies so that you can run your life vs letting life run you.

More info and tickets here: earthbeatfestival.com with the best priced tickets available before 10th March.

See you there!
Carrie Marie
www.selfnurture.org

Art 'n Tartan seeks entries

Entries are now being sought for this year's 10th Anniversary Waipu Museum Wearable Art Contest and Show.

Artists and designers entering the show will be vying for a huge prize pool of around \$15,000 over four main categories and the ever-popular mask section for kids.

The only criteria that covers all the garments is that they contain an element of visible and obvious tartan - painted, stitched, welded, engineered, embroidered or woven - no holds or materials barred.

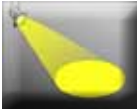
Artistic Director Debi Walters Brown who has an enormous amount of experience in all aspects of theatrical productions and is a great fan of wearable art, says ... "Any aspect of art that is wearable can find a place in Art'nTartan. The work must be original, innovative, revolutionary and well made. Copies and store-bought costumes will not be allowed."



Debi's concept for the show will focus on presenting the costumes in a way that maximises the skill of the designers and models, enhanced and supported by exceptional lighting effects, music and

local performers, Kapa Haka groups, singers, dancers and the beloved Scottish pipers so representative of the heritage of Waipu.

Entry forms - closing date 24th April - can be downloaded from the Waipu Museum Website or from the front desk of the Museum. Entry fee is \$25 per garment and \$10 for mask entries. Designer's creations will need to be completed by preliminary judging on June 7th. Keep an eye on the Waipu Museum Art'nTartan Facebook page for updates or contact artntartan@gmail.com for any further queries.



Spotlight on... Miriam and Meshach Adomea

Miriam and Meshach have lived in Paparoa since mid 2006. They are the Pastors at Otamatea Co-operating Parish, which includes the Paparoa Community Church and St David's Church at Maungaturoto.



Miriam was born as an only child in a remote village in Vanuatu. Her dad died when she was young and she was raised by her mum. Meshach grew up in the Solomon Islands and they met when they were both studying at the University of South Pacific in Fiji. When they first came to New Zealand in 1977 it was to attend Victoria University in Wellington.

Until church work got busier, Miriam worked as a caregiver throughout the Otamatea district. She loves caring for the elderly as she feels that they have served the community all their lives and caring for them is her way of giving back to them.

Prior to coming to Paparoa they did not know the place existed. They had worked as ministers in Waipu, and then spent more time working in the Solomon Islands, before returning to NZ for further training in the Bible, at Laidlaw College in Auckland.

Soon after graduating, Meshach, with the Masters of Ministry, and Miriam, with the Bachelor of Ministry moved to Paparoa.

Initially, working at the Church was a challenge cross-culturally, but to Miriam everyone is a friend and they quickly became part of the community. Having lived in Fiji, Wales, and New Zealand over 39 years, they know that what makes a place likeable is the people. In serving the Church here they have learned so much and have made very special friendships which they know will last beyond this lifetime.

There are six children, 17 grandchildren and one great grandchild. They raised one grandson through school years and they have cared for others of the extended family. Miriam says "It's not easy being a grandparent and parent at the same time. You can't just have the fun

and then pass them back!

When they retire (and it's not yet), the plan is to live both in New Zealand and the Islands, teaching ministry to Christians and travelling New Zealand visiting the many people they know all around the country. Paparoa was once known as The Gospel Valley and both Miriam and Meshach would love the village to be called that again, someday.

To them, Paparoa will always be known for its friendly, loving and caring people.

We hope they will keep us on their list and spend many more years in Paparoa.

THE BACK MAN

Paparoa

**BACK, NECK & SHOULDER PAIN
SPORTS INJURIES
MUSCULAR ISSUES
STRESS TENSION & HEADACHES**

**Geoff Gore
022 150 4828**

Dip.CST (London), Dip. Kin (UK)

**STRAIGHTENING BODIES OUT
SINCE 1980**

Keith the TV Guy

Freeview digital TV



20 TV and 9 Radio/Music channels are currently being transmitted.

Satellite dishes, decoders, cable etc., supplied and installed.

09 431 7143
or 021 239 4251

Pets in the Valley



The answer is out... the Mystery Poo belonged to a **KIWI bird!**

At the Paparoa A&P Show a part of the 'Kids' Country Challenge' was a section with 10 different stool samples to be matched to 10 animals. The task was to select which one belonged to which.

There was also a special 'mystery poo' to identify and a couple of kids guessed it right. I know lots of parents were keen to know the answers too.

There were a couple of clues - bird poos have what is called a urate fraction - that is the white part of the poo. This is because unlike mammals which urinate and defecate separately, birds pass both lots of waste at the same time via a cloaca. The part filtrated out by the kidneys is the white component. Other clues were that the animal ate some corn, and the size of the sample gave a clue to the size of the bird!

Well done to all the kids who gave the 'Challenge' a try and thank you to the wonderful Robert Webb of Northland bird recovery who never even batted an eyelid when I called in to request a sample.

My thoughts are with the wild kiwis who, like every one else will be desperate for rain. Hope some arrives soon.

Janine

Need a Shed?



- Timber and steel buildings any size
- We do plans and engineers designs for council
- Farm sheds
- Commercial buildings
- Feed pad shelters
- Goat/Chicken sheds
- Horse stables
- Lifestyle sheds
- Excavation, driveways and concrete floors

Your local builder: Andre Nicolai 021 202 9854

Painter & Decorator

Tradesman's quality work guaranteed



- Interior
- Exterior
- Spray finishes
- Roofs
- Waterblasting

For your free quote call Mike 021 529 025

OCS March news

It is with sadness that we share the news of the passing of one of our ex-colleagues. Liz Bourne came to work at the House as volunteer on the reception desk. After a couple of years, she trained as financial mentor where she helped numerous clients with their WINZ account, budgets and generally provided great support to them. She also took charge of the monthly seniors' lunch, doing most of the cooking and became very popular with the seniors due to her bubbly personality. She suffered ill health for years until it became such that

she had to leave work just over a year ago. Sadly, her illness finally took over and we said our final goodbye on Tuesday 4th February with her partner, son and daughter, her extended family and many friends. Liz will be missed by all.

February events went smoothly and helped entertain a good mix of locals, especially the monthly seniors' lunch where the St John kitchen was in the skilled hands of our new caterers. A beautiful meal was enjoyed by everyone with high praise coming back to us for days afterwards.



MARCH CALENDAR:

Fun & Games 10-12 every Monday at Footprints Room.

Senior's Lunch - Wednesday 4th St John Hall.

Whangarei shopping trips - Tuesday 11th/Weds 25th

Chocolate Bingo at Footprints Room - Wednesday 18th.

From everyone at YOUR Community House Otamatea Community Services, 155 Hurndal St, Maungaturoto

CLEMENTS FENCING
For all your yard and fencing requirements

021 636 912
oclements@ubernet.co.nz

I've been thinking about ... Waitangi Day

Well that's Waitangi Day for another year.

Do you remember what the day used to be? You could take your family and picnic on the Treaty Grounds, enjoying the view of the navy frigate moored in the Bay dwarfing the small craft and waka on the water. There were speeches of course, and an all embracing feeling of collective enjoyment of the venue and the people. There's a dose of nostalgia for you!

Since the 1980s the Waitangi day has become a week-long airing of Maori grievances.

I don't belittle the grievances. I can well understand the trauma of conquered peoples whose lands were occupied and largely alienated by



strangers of another culture. Early Governors and Governments exploited intra and inter tribal differences to get land for European settlement.

They were not always very particular about fair dealing or even legalities with individuals or groups. Of course the Maori voice should be heard and grievances addressed.

I even admire the persistence of Maori leaders, protesters,

politicians and radicals who have taken ownership of Waitangi week to the extent that Governments and Ministers and MPs play their game and arrive in Waitangi to take part in this huge public relations exercise.

The question is whether Waitangi week is the time to achieve anything but political rhetoric.

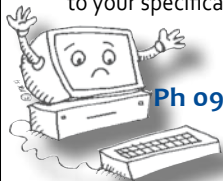
By the 6th of February I am entirely over the whole palaver.

I very much regret that we have lost the simple Waitangi Day which enabled us to celebrate being New Zealanders together.

RS

R & D MACDONALD COMPUTERS

Call Ross with your computer problems & repairs
He'll even build a computer to your specifications



Ph 09 431 6221

email: ross@paradisebreeders.co.nz

BATTENSBY Bros.

CONTRACTING LTD

- Undersowing/stitching
- Spreading
- Silage & Hay
- Fertiliser
- Firewood (WINZ approved)



Glenn 021 983 734 Ross 021 983 594

Ph: 09 431 6186 Email: battensbybrothers@xtra.co.nz

HOMEKILLS

WAYNE & ANNETTE

09 439 2020



Dry Aged Beef Specialists

Traditional Manuka wood smoked Bacon & Ham

No Retail

TOKA TOKA

HEY, KIDS ...

HOMEMADE FRUIT ICE BLOCKS!

The trickiest part of this recipe is waiting for the ice to freeze!

HOMEMADE FRUIT ICE BLOCKS

INGREDIENTS

- ◆ Water (or diluted fruit juice)
- ◆ Grapes/blackberries/blueberries/nectarines/peaches or a mix of all these! - or
- ◆ Lemon/lime/orange
- ◆ Or strawberry/plum and ginger!



ANY fruit would be yummy.

** If you don't have fruit trees, nicely ask a neighbour who has for a few ripe pieces this month!*

HOW TO MAKE YOUR FRUIT ICEBLOCKS

1. If you have a blender, blend the water/juice and fruit to make a slurry, fill ice block holders*.
2. If you don't have a blender, cut the fruit into small pieces; put into ice block holders* and pour water/juice over the top.
3. Remember to leave space for **e-x-p-a-n-s-i-o-n** as the ice blocks freeze!
4. Cool down on a hot day with your very own ice blocks.

** Don't have ice block holders? What about using plastic drinking cups and forks as sticks?*

2020 Day Camp

Get your children off the couch, away from their screens and into the great outdoors. Otamatea Day Camp is a three day adventure for 6 -12 year olds where kids can spend time having classic 'kiwi' fun - cook sausages over an open fire,



Two young participants at Day Camp 2019

try their hand at a variety of sports and fun activities, learn new skills like archery, wood work or t-shirt design, meet new people and hang out with old friends. They will spend time in our big tent listening to Bible stories

and singing songs, plus in the outdoors, compete as teams in our bush hut building competition!

We also have opportunities for kids 13 years and over to be 'Teen Leaders' to help out while having fun.

Day Camp 2020 will be held on April 15, 16 and 17 on an amazing farm at Paparoa Station Road. More info about registrations and fees will be out soon - mark the dates on your calendar and follow us on Facebook: 'Otamatea Day Camp'.

Natalie Chambers

Paparoa Sports and Recreation Assoc

Twilight

Fun Walk and Run



SATURDAY 4TH APRIL 4.00pm

Registrations from 2.30pm

4km or 4.8km options

**Adults \$10
Junior (under 18yr) \$5
Family (up to 5) \$20**

From Paparoa Sports Pavilion
Lots of Spot Prizes

Event Enquiries: Libby jones 021 208 0093 hames.jones@xtra.co.nz

SHOP & BREW
Moonshine & Curios
& Old Fashioned Lollies
Home Brew Supplies
Great Gift Ideas




Wed-Fri.... 10am-4pm
 Sat 9am-3pm
 Sun 10am-2pm

1994 Paparoa Valley Rd ... **09 431 6547**

LATTO BUILDERS



021 7727 66

**House Construction, Alterations
Renovations or General Repairs**



OUT & ABOUT AROUND TOWN

It's farewell to the Brownlies, Dennise and Robert who have lived many years on the corner of Ararua Road and SH12. They're currently nomads with friends and family, but will reside in Waipu as soon as their new home is built. Meanwhile Dennise plans to remain actively involved with White Rock Gallery.

Also it's farewell to Marian Harkness (the keen mahjong lady) and her partner Brian who

live at the corner of Franklin Road/Paparooa Oakleigh Road who are retiring to Orewa.

A change for Tennis - now on Tuesday evenings from 6pm. All welcome.

Apologies again to Lawrie Hughes, our editor still managed to get it wrong. Third time lucky. Keep on strumming your guitar. You will find Salt River Band busking regularly at Paparooa market on a Saturday. Cheers Lawrie!

COLOUR & CUTZ

- Ladies & Mens Cuts
- Colours & Highlights
- Weddings
- Gift Vouchers



All colours & products used at the salon are organic

Salon 431 7255 Gaylene 021 115 8056

OPEN TUESDAYS TO SATURDAYS
1994 Paparooa Valley Road

YOUR TYRE SPECIALIST

Providing 60 years of service in the heart of Kaipara.

- Tyres
- Brakes
- Wheel
- WOF
- Suspension
- Balancing
- Servicing
- Alignment
- Batteries

Garnetts Tyre Service

📍 2 Gorge Rd, Maungaturoto

☎ 09 431 8255

BRIDGESTONE TYRE CENTRE

Lazy Sunday picnic

About 30 locals enjoyed the picnic atmosphere and good company at the annual Summer Paparooa picnic.

Food was shared and music from Salt River was enjoyed under the shade of trees and gazebos.

The children enjoyed the playground and tree climbing. Visitors who were passing through joined in, enjoying their own picnic lunch in the shade with the bonus of live music.

Make sure you get along next year and support this PPI event for our community.



Councillor Anna Curnow and Mayor Jason Smith, with Louie, enjoyed Paparooa's Picnic on the Green

Paparooa Calendar

To avoid clashes when booking events, Paparooa Connections is developing an annual calendar of dates.

This is what we have so far, so if your event is not on it please email paparooa.connections@gmail.com

PAPAROOA PLANNED EVENTS CALENDAR 2020

JANUARY

- 1st Jan - kids fishing competition Pahi
- 2nd weekend January - Tinopai Fishing competition
- Anniversary weekend - Pahi Regatta

FEBRUARY

- First Saturday - Paparooa A&P Show

MARCH

- Sunday 1st - Paparooa Connections meeting Sports Pavilion
- Saturday 14th - Family Sports and Games fun afternoon 3pm - Sports Pavilion
- Saturday 14th - Fishing competition Pahi
- Wednesday 18th - Grief and Loss talk, Sports Pavilion 1-4pm
- Friday March 20th - Lions Pioneer Luncheon
- Weekend 28th - 29th Otamatea High School Relay for Life Whangarei

APRIL

- Saturday 4th - Twilight Walk, Sports Pavilion
- From Thursday 15th - Saturday 17th - Otamatea Day Camp 3 days outdoor fun

MAY

- Weekend 8th, 9th, 10th - Paparooa Primary School 150th celebrations
- Saturday 16th - Autumn retro dance
- Monday 18th - Lions speech night competition

JUNE

- Saturday 27 June - Paparooa Rugby Club 100th Celebration

WHAT'S ON - MARCH 2020

The Kauri Museum open 7 days, annual passes available for Otamatea residents
Exhibitions - Textiles: 'The Perfect Accessory'
Ngā Taonga, Te Hononga Tāngata

- The treasures that bring our people together - on now

- Saturday 8th** - 'Top of the Rock' Kaiwaka Sports (poster pg 2)
- Saturday 14th** - Family Sports & Games Fun, 3pm Sports Pavilion (front page)
- Saturday 14th** - Ruawai Lions Annual Auction 9am onwards (poster pg 5)
- Saturday 14th** - Fishing competition Pahi
- Wednesday 18th** - Grief and Loss talk, Sports Pavilion 1-4pm (pg 3 advert))
- Friday March 20th** - Lions Pioneer Luncheon (pg 7 Lions article)

REGULAR EVENTS, MEETINGS AND ORGANISATIONS

- Anglican Church St Marks** 1st, 2nd & 4th Sundays 10am, Hook Road, Paparoa
- Ararua Church** 10.30am every Sunday. All welcome ph 431 6622
- Art Studio, Ruawai** Wed 10-12noon ph Frances 439 2554
- Arty Farties** Thur/Fri/Sun at the "Tile Shed"; Garage Sale Sundays 10am to 2pm;
- Badminton** Thursdays 7pm Paparoa Hall \$2 students, \$3 adults ph Pete 431 6822
- Exercise to Music** Tue 10.30am Paparoa Hall \$5 ph Rose 431 7418
- Farmers' Market** Every Saturday 9-Noon, Village Green Ph Graham 027 475 4490
- Grey Power** Last Wed in month, 1pm, Anglican Church Hall, Mgto
- Kaipara Marching Team** Weds 4-5.30pm, Mgto, ph Rose Plunkett 431 7418
- Line Dancing** Thurs 10am-noon Paparoa Hall ph Rose 431 7418
- Mainly Music** Wed 9.30am Paparoa Comm Church, Lynaire Porteous 4317 520
- Maungaturoto Opportunity Shop** Open Mon 10-1pm Wed 10-3pm Fri 10-3pm
- Maungatūroto and Districts Rotary Club** Maungatūroto Centennial Hall, Tuesday evenings 6pm, ph Stella 021 149 0877
- Otamatea Quilters** 1st and 3rd Mon month 10am, Paparoa Hall 09 439 2262
- Outdoor Bowls** Maungaturoto Green ph Tony 431 6026 or Brian 431 6884
- Pahi Hall** available for hire ph Sherryl Corbett 431 7127
- Paparoa Community Church** 10.30am every Sunday, 4 Hook Road 431 7106
- Paparoa Garden Circle** 2nd Wed of month Marg Bailey secretary. 09 280 9897
- Paparoa Hall** Functions venue ph Robyn 431 7306 or a/h Loraine 431 7290
- Paparoa Library** open Tues & Thurs 10am-4pm, Saturday 9.30-12noon
- Paparoa Lions** Dinner Meetings 3rd Mon in month 6.30pm, Sports Pavilion
- Paparoa Playcentre** Tuesday and Thursday 10am-1pm Visitors Welcome
 Ph Kirstin 431 7373 txt 021 525 425 or ph Jane 431 6148 paparoa@playcentre.org.nz
- Paparoa Primary School** Term 1 Jan 28 - April 9, Term 2 Apr 27- Jul 4. Ph 4317379
- Paparoa Toy Library** Wed 10.30-1pm, Paparoa Comm Church, Hilery 431 7330
- Paparoa Volunteer Rural Fire Force (VRFF)** 1st and 3rd Tuesday of the month 6.30pm Depot Rd ph Cohan 431 6668
- Plunket Ready Steady Wriggle** Mon 10am Sports Pav. Tina Ball 021 033 5128
- Selwyn Centre** Thurs 10am for over 65's, St Marks, Hook Rd, ph 431 8193
- Sports Pavilion** Functions Venue Bookings ph Jane Bailey 431 6148
- St Mary's Catholic Church** 10am Wed, 6pm Sat, Maungaturoto
- Table Tennis** Tues 7.30pm, Sports Pavilion \$2 Pete 431 6822
- Tennis** Family tennis Tuesday evenings 6pm, ph Sue 431 6224, Pete 431 6822
- White Rock Gallery** Open at The Kauri Museum 7 days 10-4pm ph 021 0267 8241
- Yoga Chair Yoga** - Tuesdays & Fridays, 9.30am Paparoa Sports Pavilion
 Monday: 6pm Mgto Centennial Hall: Wednesday 5pm Matakahe Hall
 ph Jenny 021 114 3370

PLEASE UPDATE US WITH YOUR DETAILS: press@paparoa.org.nz PP

HOOK, LINE & SINKER

Fishing is still very good at the moment.



There are mostly snapper and not many kahawai or gurnard, but lots of small sharks.

Fish are being caught not far from Pahi, up by the red buoy, and close to the mussel farm.

Just go out and try your luck - the fish are there.

Happy Fishing!

Paparoa Press CLASSIFIED ADVERTISING

Fresh homegrown veges & herbs at the Market
 Saturdays Paparoa 9-12
 Paul Fluhler 021 431 645

Storage Available
 In Paparoa: Secure 20 foot Containers - contact
 Brian Plunkett 09 4317 418.
 Paparoa County Depot Trust

PLACE YOUR CLASSIFIED HERE
 Your header line plus two small lines of text (approx 16 words, \$5)

LOCAL TIDES for March 2020

MARCH TIDES - CALCULATED for PAHI-WHAKAPIRAU

DATE	LOW	HIGH	DATE	LOW	HIGH
1st	09.46	16.10	17th	12.10	18.40
2nd	10.33	16.58	18th	13.29	07.21
3rd	11.32	17.58	19th	14.44	08.43
4th	12.45	06.40	20th	15.43	09.47
5th	14.02	08.00	21st	16.30	10.35
6th	15.11	09.13	22nd	17.10	11.15
7th	16.09	10.12	23rd	17.46	11.49
8th	17.00	11.03	24th	18.19	12.21
9th	17.48	11.50	25th	06.31	12.52
10th	18.34	12.36	26th	07.02	13.22
11th	06.52	13.21	27th	07.33	13.52
12th	07.37	14.06	28th	08.04	14.24
13th	08.23	14.52	29th	08.38	14.58
14th	09.11	15.40	30th	09.17	15.38
15th	10.02	16.32	31st	10.04	16.26
16th	11.01	17.31			

Community Directory

EMERGENCY: FIRE ■ POLICE ■ AMBULANCE dial 111

COAST TO COAST HEALTH CARE

- Maungaturoto Medical Centre: 8am-5pm Mon-Fri 09 431 8576
- Paparoa Clinic: Open Tues and Thurs 8am-5pm..... 09 431 7222
- For urgent after hours medical service (Wellsford)..... 09 423 8086
- DISTRICT NURSE** Dargaville Hospital 09 439 3330
- Healthline - 24 hour service..... 0800 611 116
- HOSPICE KAIPARA** Dargaville Hospital 09 439 3330
- KAIPARA DISTRICT COUNCIL** Helpline 0800 727 059
- Mangawhai Office..... 0800 100 388
- KAIPARA PHYSIOTHERAPY** Lyndsay Bargh/Lynne Rhodes...09 4391656
- LINKING HANDS** Health Shuttle Service, Maungaturoto.09 431 8969
- LIONS CLUB PAPAROA** Secretary Mark Pilkington09 431 7369
- MAUNGATUROTO PHARMACY** 09 431 8045
- MAUNGATUROTO REST HOME** 09 431 8696

- NKT RECYCLING** Huarau Road 10am - 2pm Mon-Sat..... 09 431 8304
- OTAMATEA COMMUNITY SERVICES** Community House 09 431 9080
- PAPAROA LIBRARY** Free Membership. ContactJas 022 678 1474
- Tuesday and Thursday 10am-4pm
- Saturday 9.30am-12midday
- PAPAROA PLAYCENTRE** paparoa@playcentre.org.nz
- PAPAROA PLUNKET** .Plunket Nurse Louise 027 2823987 or 09 438 2508
- PLUNKET** Helpline 0800 933 922
- PAPAROA PRIMARY SCHOOL** 09 431 7379
- PROGRESSIVE PAPAROA INC (PPI)**Graham Taylor.... 09 431 7209
- PARENT PORT Inc.** free help for families Linda 09 425 9357
- PODIATRIST / FOOTCARE** Jayne Short 022 542 0477
- YOUTH & WHANAU FOCUS** South Kaipara, Rose09 431 7418



DAHLIAS for DEMENTIA

Dahlias for Dementia Successful Garden & House Tour



The Dahlias for Dementia Garden and House Tour has exceeded organisers' expectations, both in attendance and financially. Great news for the fundraising efforts for the Maungaturoto Dementia Unit.

Nearly 700 registrations saw visitors come from far and wide, as well as many locals, all of whom enjoyed the varied and delightful gardens and the interesting and well cared for homes that were open for display.

PP



All hands on deck for Paparoa Plunket



A recent working bee at the plunket house in Franklin Road saw families out working on the garden and repainting the fence.

Photos show the families all getting stuck in for the recent improvements at Paparoa Plunket.

Paparoa and District's previous local Plunket Nurse, Cynthia has been replaced by Louise. The changed phone numbers are: 027 2823987 or 09 438 2508.

Ema Kelly Community Support Coordinator



Cameron Philips
CABINETMAKER
Matakohe

- Kitchens
- Custom Furniture
- Furniture repairs & restoration
- Custom run mouldings
- Stairs & Timber Doors
- Residential & Commercial Joinery

QUALITY WORKMANSHIP
09 431 7579
cam@cp-cabinetry.co.nz
<http://cp-cabinetry.co.nz>

Creators
HOMEBASED CHILDCARE

NEED CHILDCARE?

We have homebased educators in your area with spaces available now.

Contact Sara McKinley on 021 468 205 for more information.

0800 CREATORS WWW.CREATORS.ORG.NZ

Award winning extra virgin olive oil

CHAPEL OLIVE OIL

Grown on the edge of the Kaipara.
Winner of two golds, one silver and best in class at the 2016 Olivetti Awards.

Order from our website
www.chapeloliveoil.co.nz
or visit our olive grove at
46b Merrill Road Paparoa
Ph 09 431 7572